

# ARGON™

World leaders in CBRN/  
HazMat training systems

## RDS-SIM

Training simulator for the D-tect SYSTEMS\* Radiological  
Detection System (RDS) Beta Photon Base Unit

\* A division of Ludlum Measurements, Inc.

**Argon's RDS Beta Photon Base Unit simulator provides you with a training device that enables your students to experience every operational feature of the real D-tect SYSTEMS RDS without the need to utilize an ionizing gamma or beta radiation source.**

To help you overcome the regulatory, environmental, and health and safety challenges associated radiation training and to permit you to deliver engaging radiological exercises how, when and wherever you like, the RDS Simulator responds to safe electronic sources that you can deployed with ease in minutes. Furthermore, you can also implement wide area tactical field and nuclear emergency response exercises involving additional compatible dosimeter and spectrometer simulators.

### **RDS-SIM simulates:**

- Both GM detectors
- Beta window function and response.
- Dose, Dose rate and accumulated dose functions.
- All audible and visual alarms.
- All measurement units of actual RDS
- Contamination and decontamination.
- Split / dual window function when simulation probes are connected.

**Now you can provide high quality survey meter training, developing skills in:**

- Survey and location of radioactive sources
- Isodoserate mapping
- Shielding
- Safe demarcation
- Inverse Square Law response ( $1/r^2$ )
- Dose and Doserate management
- Effects of different types of shielding such as brick, wood and glass.



### **Enhance training provision with RDS-SIM**

RDS-SIM permits you to safely teach critical search, reconnaissance, survey and location skills as well as a practical understanding of inverse square law, isodoserate mapping, shielding and safe demarcation. The RDS-SIM receives encoded signals representing specific beta/gamma radionuclides from deployed electronic simulation sources or PlumeSIM, and with the simulated beta window cover open the simulator correctly responds to the beta component while versatile magnet packs simulation beta sources facilitate training in contamination and decontamination.

A wide range of simulation probes will be available for use with the RDS simulation base unit.

**Simulation Beta Photon probe indicating higher dose rate reading remote from the RDS-SIM base unit.**



**Enhance your emergency training mission further by using the RDS-SIM with simulation dosimeters and spectrometers.**

## Training simulator for the D-tect SYSTEMS Radiological Detection System (RDS) Beta Photon Base Unit

### You can teach the use of complementary equipment types with common simulation sources

You can deliver realistic simultaneous training in the use of different types of radiation detection instruments. RDS-SIM is compatible with other dosimeter, survey/radiac meter, and spectrometer simulators manufactured by Argon Electronics, permitting multi-detector, multi-isotope training to take place within the same scenario. You can even optionally include hazardous substance releases including chemical warfare agents to drive HazMat / CW simulation detectors.

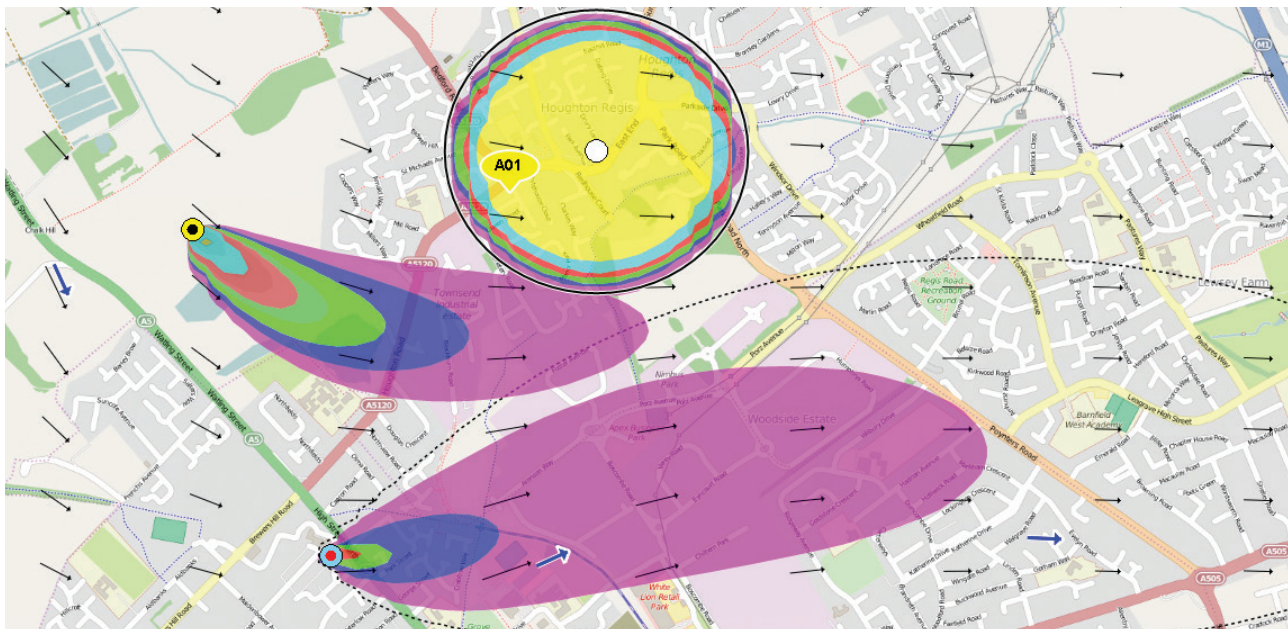
### PlumeSIM – Simulation of wide area tactical and emergency response field exercises

The RDS-SIM is also compatible with Argon's PlumeSIM system. PlumeSIM enables real time instrumented wide area operational

training exercises to be conducted using single or multiple simulation device types that respond in the real world to multiple virtual radiation or chemical hazard release events. For further information on PlumeSIM please see our separate literature for details of this innovative system or contact us for your free evaluation copy of PlumeSIM.

### Cost effective realistic training for your teams

RDS-SIM works on the same battery supply as the real instrument. The simulators require no preventative maintenance or recalibration, reducing the cost of ownership. Expensive damage to real detectors is avoided which means operational readiness is maintained.



PlumeSIM compatibility enables you to provide Table Top and Live field exercises for plume release and radiological dispersal device response training.

#### Argon Electronics (UK) Ltd:

Unit 16, Ribocon Way,  
Progress Business Park,  
Luton, Bedfordshire,  
LU4 9UR U.K.

T: (USA) 571 210 1258  
T: (UK) +44 1582 49 16 16  
E: sales@argonelectronics.com  
www.argonelectronics.com